



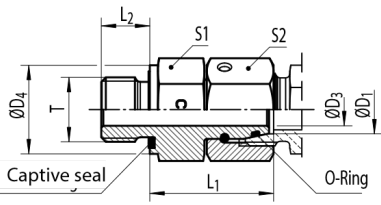
C-EGE-R-WD

Male Stud Connector with Cone End

Male BSPP Stud Connector with Captive seal (ISO 1179, Type 24° Swivel (DIN EN ISO 8434-1)



C-EGE-M-WD



Series	PN [bar]		ØD ₁ [mm]	T	ØD ₃ [mm]	ØD ₄ [mm]	L ₁ [mm]	L ₂ [mm]	S1 [mm]	S2 [mm]	Ordering Code *	kg/100	
	C	CF											
L	315	500	6	G1/8A	2.5	14	24.5	8	14	14	C-EGE 06 LR WD	2.4	
			8	G1/4A	4.0	19	29.5	12	19	17	C-EGE 08 LR WD	4.4	
			10	G1/4A	6.0	19	27.5	12	19	19	C-EGE 10 LR WD	4.2	
	315	400	10	G3/8A	6.0	22	29.0	12	22	19	19	C-EGE 10 LR 3/8 WD	6.2
			12	G3/8A	8.0	22	34.0	12	22	22	22	C-EGE 12 LR WD	6.9
			12	G1/4A	6.0	19	27.5	12	19	22	22	C-EGE 12 LR 1/4 WD	6.5
			12	G1/2A	8.0	27	29.5	14	27	22	22	C-EGE 12 LR 1/2 WD	11.4
			15	G1/2A	10.0	27	32.0	14	27	27	27	C-EGE 15 LR WD	12.1
			18	G1/2A	13.0	27	31.5	14	27	32	32	C-EGE 18 LR WD	13.7
			18	G3/4A	13.0	32	29.5	16	32	32	32	C-EGE 18 LR 3/4 WD	18.2
	160	250	22	G3/4A	17.0	32	32.5	16	32	36	36	C-EGE 22 LR WD	19.6
			28	G1A	22.0	40	35.0	18	41	41	41	C-EGE 28 LR WD	36.0
			35	G1 1/4A	28.0	50	42.5	20	50	50	50	C-EGE 35 LR WD	45.5
			42	G1 1/2A	34.0	55	46.5	22	55	60	60	C-EGE 42 LR WD	66.2
			6	G1/4A	2.5	19	27.0	12	19	17	17	17	C-EGE 06 SR WD
S	630	800	8	G1/4A	4.0	19	29.5	12	19	19	C-EGE 08 SR WD	5.0	
			10	G3/8A	6.0	22	32.0	12	22	22	22	C-EGE 10 SR WD	7.4
			12	G3/8A	8.0	22	34.0	12	22	24	24	C-EGE 12 SR WD	8.2
	630	630	12	G1/4A	5.0	19	31.5	12	19	24	24	C-EGE 12 SR 1/4 WD	14.0
			12	G1/2A	8.0	27	35.0	14	27	24	24	C-EGE 12 SR 1/2 WD	14.0
			14	G1/2A	9.0	27	36.5	14	27	27	27	C-EGE 14 SR WD	12.6
	400	630	16	G1/2A	11.0	27	37.5	14	27	30	C-EGE 16 SR WD	14.6	
	400	400	20	G3/4A	14.0	32	43.0	16	32	36	C-EGE 20 SR WD	22.1	
	400	400	25	G1A	18.0	40	48.0	18	41	46	C-EGE 25 SR WD	40.2	
	315	400	30	G1 1/4A	23.0	50	51.0	20	50	50	C-EGE 30 SR WD	58.2	
	315	400	38	G1 1/2A	30.0	55	60.0	22	55	60	C-EGE 38 SR WD	78.6	

*Replace the character "C" with "CF" when you require steel!
C = Stainless Steel, 1.4571 (Seal FKM) **CF** = Galvanized Steel Cr(VI)-free (Seal NBR)