

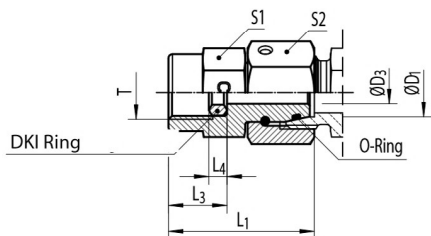


C-MAVE Pressure Gauge Swivel Connector

24° Swivel (DIN EN ISO 8434-1) /
Female BSPP Thread



Reducing / Expanding
Male Stud Connectors
Overview



Series	PN [bar]		ØD ₁ [mm]	T	ØD ₃ [mm]	L ₁ [mm]	L ₃ [mm]	L ₄ [mm]	S ₁ [mm]	S ₂ [mm]	Ordering Code*	kg/100
	C	CF										
L	315	315	6	G 1/4	2.5	35.5	14.5	4.5	19	14	C-MAVE 06 LR	4.7
			8	G 1/4	4.0	35.5	14.5	4.5	19	17	C-MAVE 08 LR	5.4
			10	G 1/4	5.5	36.0	14.5	4.5	19	19	C-MAVE 10 LR	6.0
			12	G 1/4	5.5	36.0	14.5	4.5	19	22	C-MAVE 12 LR	7.2
S	630	630	6	G 1/2	2.5	42.5	20.0	5.0	27	17	C-MAVE 06 SR	10.2
			6	G 1/4	2.5	35.5	14.5	4.5	19	17	C-MAVE 06 SR 1/4	5.4
			8	G 1/2	4.0	43.5	20.0	5.0	27	19	C-MAVE 08 SR	10.8
			8	G 1/4	4.0	35.5	14.5	4.5	19	19	C-MAVE 08 SR 1/4	5.9
			10	G 1/2	6.0	43.5	20.0	5.0	27	22	C-MAVE 10 SR	11.7
			10	G 1/4	7.0	36.0	14.5	4.5	19	22	C-MAVE 10 SR 1/4	6.8
			12	G 1/2	7.0	45.0	20.0	5.0	27	24	C-MAVE 12 SR	12.9
			12	G 1/4	7.0	39.0	14.5	4.5	19	24	C-MAVE 12 SR 1/4	8.5

*Replace the character "C" with "CF" when you require steel!
C = Stainless Steel, 1.4571 (Seal FKM) CF = Galvanized Steel Cr(VI)-free (Seal NBR)