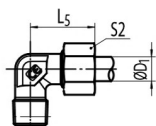
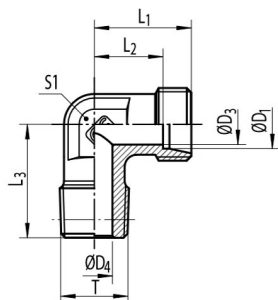


# C-WE-R-KEG Male Stud Elbow

Male BSPP Stud Connector - Tapered (DIN 3858-2 Type C) /  
24° Tube Connection (DIN EN ISO 8434-1)



C-WE-M-KEG



Series	PN [bar]		ØD <sub>1</sub> [mm]	T	ØD <sub>3</sub> [mm]	ØD <sub>4</sub> [mm]	L <sub>1</sub> [mm]	L <sub>2</sub> [mm]	L <sub>3</sub> [mm]	L <sub>5</sub> [mm]	S <sub>1</sub> [mm]	S <sub>2</sub> [mm]	Ordering Code *	kg/100
	C	CF												
LL	100	100	4	R1/8 KEG	3.0	4.0	15	11.0	17	21	9	10	C-WE 04 LLR KEG X	1.2
			6	R1/8 KEG	4.5	4.5	15	9.5	17	21	9	12	C-WE 06 LLR KEG X	1.3
			8	R1/8 KEG	6.0	6.0	17	11.5	20	23	12	14	C-WE 08 LLR KEG X	1.4
			10	R1/4 KEG	8.0	7.0	21	15.5	26	27	12	17	C-WE 10 LLR KEG X	2.3
			12	R1/4 KEG	10.0	7.0	21	15.0	27	27	14	19	C-WE 12 LLR KEG X	2.9
L	315	315	6	R1/8 KEG	4.0	4.0	19	12.0	20	27	12	14	C-WE 06 LR KEG X	2.0
			6	R1/4 KEG	4.0	6.0	21	14.0	26	29	12	14	C-WE 06 LR 1/4 KEG X	2.8
			8	R1/4 KEG	6.0	6.0	21	14.0	26	29	12	17	C-WE 08 LR KEG X	2.9
			8	R1/8 KEG	6.0	4.0	21	14.0	26	29	12	17	C-WE 08 LR 1/8 KEG X	2.6
			8	R3/8 KEG	6.0	9.0	24	17.0	28	32	17	17	C-WE 08 LR 3/8 KEG X	5.0
			10	R1/4 KEG	8.0	7.0	22	15.0	27	30	14	19	C-WE 10 LR KEG X	3.5
			10	R3/8 KEG	8.0	9.0	24	17.0	28	32	17	19	C-WE 10 LR 3/8 KEG X	5.0
			12	R3/8 KEG	10.0	9.0	24	17.0	28	32	17	22	C-WE 12 LR KEG X	5.0
			12	R1/4 KEG	10.0	7.0	24	17.0	27	32	17	22	C-WE 12 LR 1/4 KEG X	4.8
			12	R1/2 KEG	10.0	11.0	28	21.0	34	36	19	22	C-WE 12 LR 1/2 KEG X	8.8
			15	R1/2 KEG	12.0	11.0	28	21.0	34	36	19	27	C-WE 15 LR KEG X	9.3
18	R1/2 KEG	15.0	14.0	31	23.5	36	40	24	32	C-WE 18 LR KEG X	11.2			
S	400	400	6	R1/4 KEG	4.0	4.0	23	16.0	26	31	12	17	C-WE 06 SR KEG X	3.8
			6	R3/8 KEG	4.0	7.0	25	18.0	28	33	17	17	C-WE 06 SR 3/8 KEG X	6.2
			8	R1/4 KEG	5.0	5.0	24	17.0	27	32	14	19	C-WE 08 SR KEG X	4.7
			8	R3/8 KEG	5.0	7.0	25	18.0	28	33	17	19	C-WE 08 SR 3/8 KEG X	6.3
			10	R3/8 KEG	7.0	7.0	25	17.5	28	34	17	22	C-WE 10 SR KEG X	6.3
			10	R1/4 KEG	7.0	5.0	25	17.5	28	34	17	22	C-WE 10 SR 1/4 KEG X	5.9
			10	R1/2 KEG	7.0	10.0	30	22.5	32	39	19	22	C-WE 10 SR 1/2 KEG X	10.6
			12	R3/8 KEG	8.0	8.0	29	21.5	28	38	17	24	C-WE 12 SR KEG X	7.5
			12	R1/2 KEG	8.0	11.0	30	22.5	32	39	19	24	C-WE 12 SR 1/2 KEG X	10.2
			14	R1/2 KEG	10.0	10.0	30	22.0	32	40	19	27	C-WE 14 SR KEG X	10.0
16	R1/2 KEG	12.0	12.0	33	24.5	32	43	24	30	C-WE 16 SR KEG X	13.0			

\*Replace the character "C" with "CF" when you require steel!  
C = Stainless Steel, 1.4571 CF = Galvanized Steel Cr(VI)-free